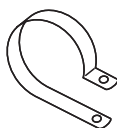
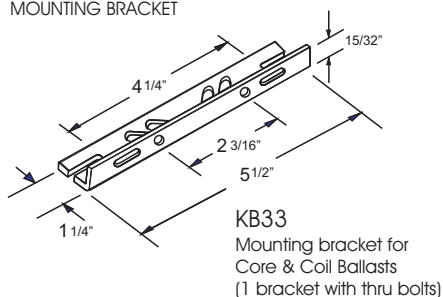


CATALOG NUMBER: E-MZAFTJ100 FOR ONE 100 WATT, M90 METAL HALIDE LAMP

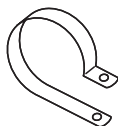
Line Voltage	120/277/347V
Regulation	
Line Volts	+/- 5%
Line Watts	+/-10%
Frequency	60 Hz
Circuit Type	HX-HPF
Power Factor (min)	90%
Insulation Class	H(180°)
Min. Ambient Starting Temp.	-20° F or -30° C

Line Voltage (Volts)	120	277	347
Line Current (Amps)			
Operating	1.16	0.50	0.40
Open Circuit	2.16	0.95	0.75
Starting	1.60	0.68	0.59
Input Watts (W)	130	130	130
Open Circuit Voltage (V)	250	250	250
Drop Out Voltage (V)	90	208	260
UL(1029) Bench Top Rise	B	A	B
Recommended Fuse (Amps)	6	3	2
HIGH POTENTIAL TEST (VOLTS)			
1 Minute	2000		
2 Seconds	2500		
Open Circuit Voltage Test(volts)	235-275		
Short-Circuit Current Test (Amps)			
Secondary Current	1.25 - 1.65		
Input Current (Amps)	0.65 - 1.60	0.35 - 0.70	0.29 - 0.55

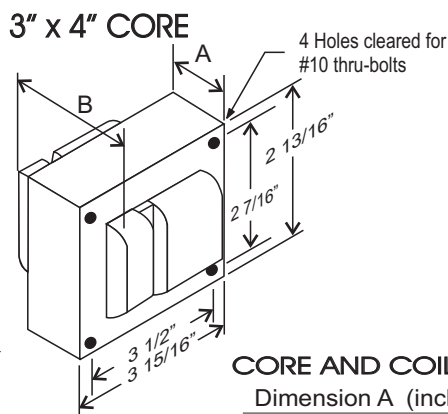
BRACKET CORE & COIL MOUNTING BRACKET



C-01
MOUNTING CLIP for round
case (Furnished as standard
with B suffix ballast)



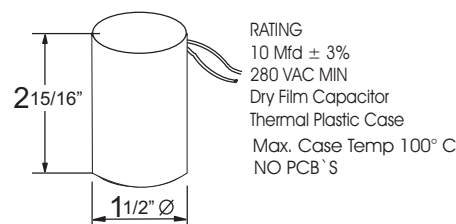
I-01
MOUNTING CLIP for oval
case (Furnished as standard
with B suffix ballast)



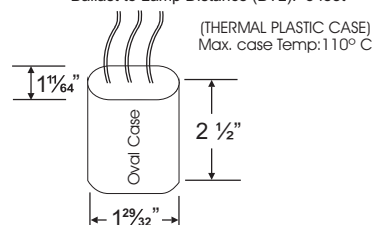
CORE AND COIL

Dimension A (inches)	1.70
Dimension B (inches)	3.15
Weight (Lbs)	6.50
Lead Lengths (inches)	12

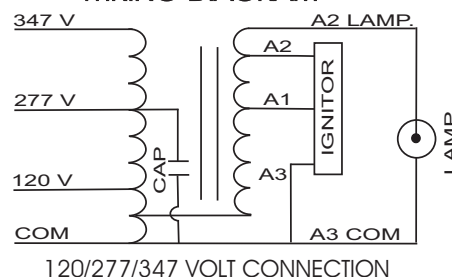
CAPACITOR



IGNITOR 356-AS-100-MH Ballast to Lamp Distance (BTL): 5 feet



WIRING DIAGRAM



Data is based upon tests performed by Industrias Sola Basic in a controlled environment and representative of relative performance. Actual Performance can vary depending on operating conditions. Specifications are subject to change without notice.



Certificate No. 006281



Made in Mexico by Industrias Sola Basic S.A de C.V.

SOLA CANADA
LIGHTING & POWER

171 Ambassador Drive
Units 8 & 9
Mississauga, ON
L5T 2J1

Phone: 905-670-0746
Fax: 905-670-9689

www.solacanada.com