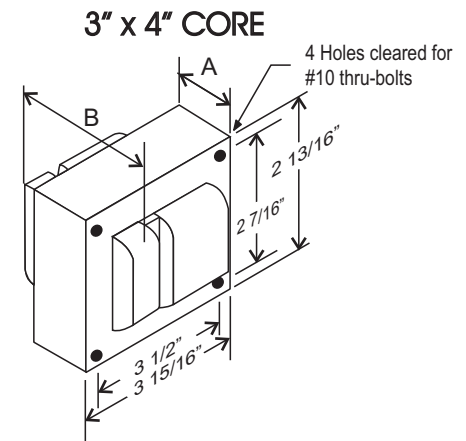


### CATALOG NUMBER: E-MCAFTJ171 FOR ONE 175 WATT, M137/M152 METAL HALIDE PULSE START LAMP

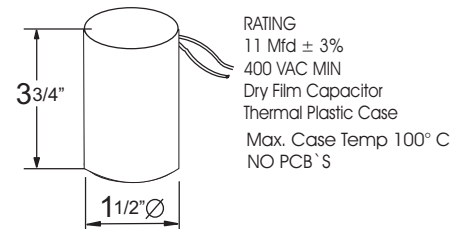
Line Voltage	120/277/347V
Regulation	
Line Volts	+/-10%
Line Watts	+/- 10%
Frequency	60 Hz
Circuit Type	CWA
Power Factor (min)	90%
Insulation Class	H(180°)
Min. Ambient Starting Temp.	-20° F or -30° C

Line Voltage (Volts)	120	277	347
Line Current (Amps)			
Operating	1.80	0.80	0.70
Open Circuit	1.80	0.80	0.70
Starting	1.10	0.48	0.37
Input Watts (W)	208	208	208
Open Circuit Voltage (V)	275	275	275
Drop Out Voltage (V)	60	140	175
UL(1029) Bench Top Rise	D	C	D
Recommended Fuse (Amps)	5	3	2
HIGH POTENTIAL TEST (VOLTS)			
1Minute	2000		
2 Seconds	2500		
Open Circuit Voltage Test(volts)	250-300		
Short-Circuit Current Test (Amps)			
Secondary Current	1.65 - 2.0		
Input Current (Amps)	0.70 - 1.10	0.30 - 0.50	0.23 - 0.40

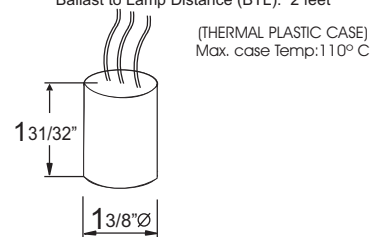


CORE AND COIL	
Dimension A (inches)	2.20
Dimension B (inches)	3.75
Weight (Lbs)	8.00
Lead Lengths (inches)	12

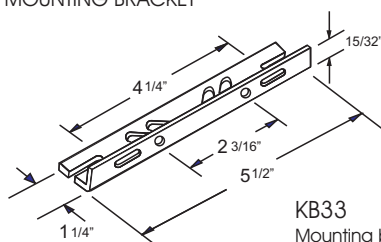
#### CAPACITOR



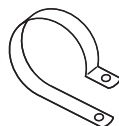
#### IGNITOR 37-63-AS-6.9-N7



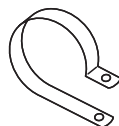
#### BRACKET CORE & COIL MOUNTING BRACKET



**KB33**  
Mounting bracket for  
Core & Coil Ballasts  
(1 bracket with thru bolts)

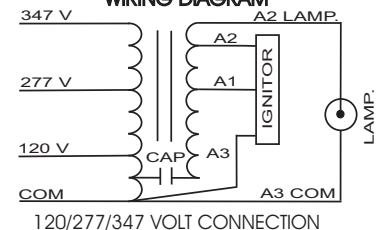


**C-01**  
MOUNTING CLIP for round  
case (Furnished as standard  
with B suffix ballast)



**I-01**  
MOUNTING CLIP for round  
case (Furnished as standard  
with B suffix ballast)

#### WIRING DIAGRAM



Data is based upon tests performed by Industrias Sola Basic in a controlled environment and representative of relative performance. Actual Performance can vary depending on operating conditions. Specifications are subject to change without notice.



Certificate No. 006281



## SOLA CANADA LIGHTING & POWER

171 Ambassador Drive  
Units 8 & 9  
Mississauga, ON  
L5T 2J1

Phone: 905-670-0746  
Fax: 905-670-9689

www.solacanada.com